

DZR BRASS FLOAT VALVE

20 BAR RATED
SIZE RANGE 10mm-50mm BSP Male Inlet



Suitable for level control on header and break water tanks in Water Treatment, Pulp & Paper, Power Generation, HVAC, Mining and other General Industries.

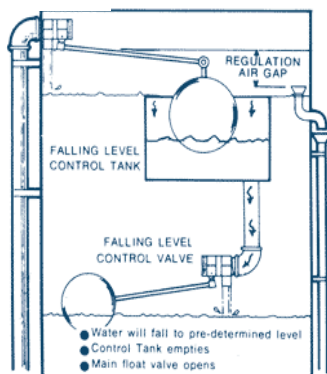
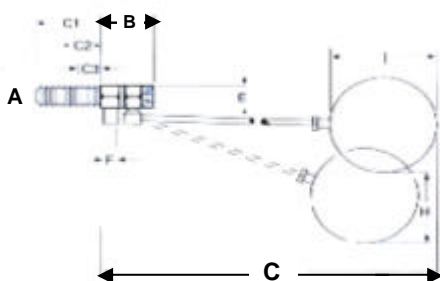
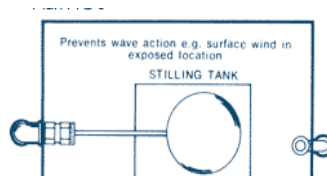
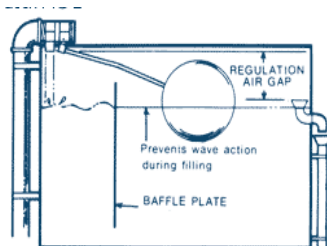
FEATURES

- Dezincification resistant body
- Ventured inlet providing maximum flow
- Precision engineered
- Cam action
- Corrosion resistant ball
- Approved by all water authorities in Australia

Fig. 90



TYPICAL INSTALLATIONS



COMPONENT MATERIAL

COMPONENT	MATERIAL
BODY	DZR BRASS
ARM	BRASS
SEAT	PLASTIC OR METAL
FLOATS	PLASTIC OR COPPER

DIMENSIONS

SIZE mm	15	20	25	32	40	50
A	15	20	25	32	40	50
B	41	45	51	57	57	79
C	419	444	533	584	660	787
COPPER FLOAT \varnothing	100	150	150	175	200	255
PLASTIC FLOAT \varnothing	115	150	150	175	200	N/A
FLOW L/min @ 500 kPa	43.5	98.0	167.0	208.0	316.0	484.0

Data Sheet No. FV-90-Rev01

For installation, operation and maintenance refer to I.O.M.

Details subject to change

Global Valves and Engineering Pty Ltd

"your partner for the future"

Tel: (02) 9868 5055 Fax: (02) 9868 5063 Email: sales@globalvalves.com.au Website: www.globalvalves.com.au