



# BALANCED PRESSURE THERMOSTATIC STEAM TRAP

## MODEL LV6 Clean Steam Trap

### THERMOSTATIC STEAM TRAP FOR PURE AND CLEAN STEAM SYSTEMS

#### Features

Balanced pressure thermostatic steam trap recommended for use in reactors, sterilizers and distribution lines in clean and pure steam systems.

1. Free-draining, virtually crevice-free design minimizes the possibility of bacteria buildup.
2. Patented "fail open" feature minimizes interruption of critical operation.
3. Large orifice provides high air venting capacity for rapid start-up and resists plugging to ensure continuous operation.
4. Compact for easy installation.
5. Maintainable design lowers cleaning costs.
6. LV6P polished to 0.8µm Ra inside and 1.2µm Ra outside, with an electro-polish option to further resist bacterial growth.



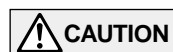
#### Specifications

Model	LV6CE	LV6SF	LV6P*
Connection	Clamp End		Tube End
Size (mm)	15, 20, 25		8, 10, 15, 25
Maximum Operating Pressure (MPaG) PMO	0.6		
Minimum Operating Pressure (MPaG)	0.01		
Maximum Back Pressure	90% of Inlet Pressure		
Maximum Operating Temperature (°C) TMO	165		
Subcooling of Capsule Fill (°C)	Up to 6		
X-element type (for <b>Clean Steam Traps</b> )	Standard	Free-draining	Polished Free-draining
Finishing (Internal / External)*	Natural Machining	0.8µm Ra / 1.2µm Ra Fine Machining	0.8µm Ra / 1.2µm Ra Polish

\* LV6EP with 0.4µm Ra electro-polishing available on request

1 MPa = 10.197 kg/cm<sup>2</sup>

PRESSURE SHELL DESIGN CONDITIONS (**NOT OPERATING CONDITIONS**): Maximum Allowable Pressure (MPaG) PMA: 1.0  
Maximum Allowable Temperature (°C) TMA: 185

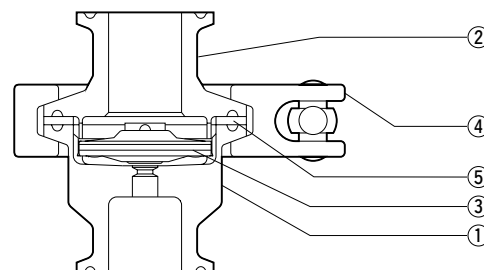


To avoid abnormal operation, accidents or serious injury, DO NOT use this product outside of the specification range. Local regulations may restrict the use of this product to below the conditions quoted.

No.	Description	Material	JIS	ASTM/AISI*
①	Lower Body	Stainless Steel	SUS316L	AISI316L
②	Upper Body	Stainless Steel	SUS316L	AISI316L
③ <sup>R</sup>	X-element	Stainless Steel	SUS316L	AISI316L
④	Body Clamp	Cast Stainless Steel	SCS13A	A351 Gr. CF-8
⑤ <sup>MR</sup>	Body Gasket**	Fluorine Resin/ Ethylene Rubber	PTFE/EPDM	PTFE/D2000CA

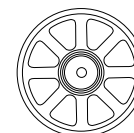
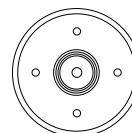
\* Equivalent materials \*\* Wetted part is PTFE only; PTFE approved to FDA CFR Title 21 Paragraph 177 Section 1550

Material certificates for major components available on request, contact TLV for details  
Replacement kits available: (M) maintenance parts, (R) repair parts



Standard X-element

Free-draining X-element

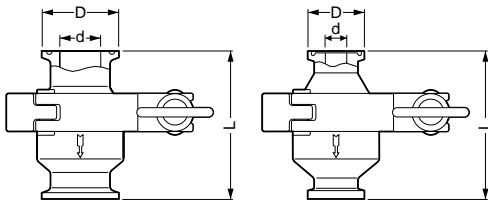


**Dimensions**

● **LV6CE/LV6SF/LV6P** Clamp End

ISO 2852

Tri-Clamp Compatible

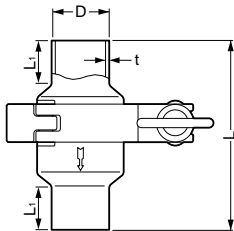


**LV6CE/LV6SF/LV6P** Clamp End\* (mm)

Size	L	$\phi D$	$\phi d$	Weight (kg)
15 (1/2")	65	34 (25)	17.5 (9.52)	0.6
20 (3/4")			22 (15.87)	0.64 (0.54)
25 (1")		50.5	23 (22.1)	0.64

\* Fits to ISO 2852, Tri-Clamp compatible, other standards available  
( ) Tri-Clamp compatible

● **LV6CE/LV6SF/LV6P** Tube End

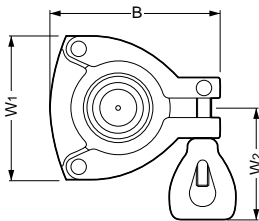


**LV6CE/LV6SF/LV6P** Tube End\* (mm)

Size	L	L <sub>1</sub>	$\phi D$	t	Weight (kg)
8	90	20	13.5	1.6	0.5
10			17.2		0.55
15			21.3	1.2	0.6
25			25.0		

\* Fits to ISO 1127, other standards available

● **LV6CE/LV6SF/LV6P** Body Clamp



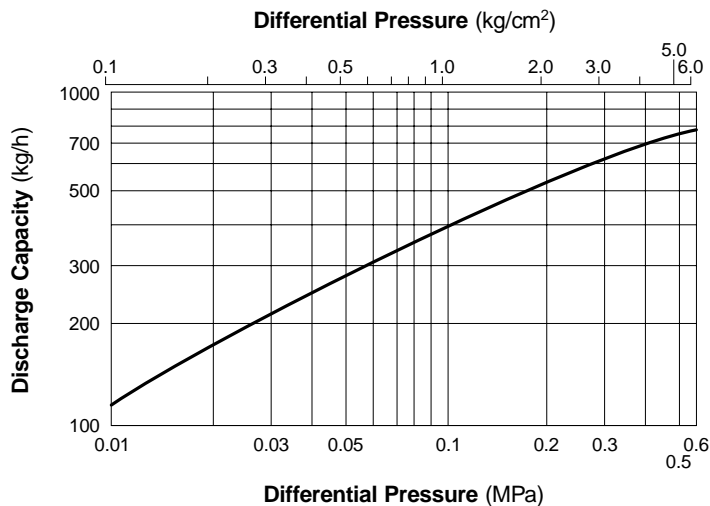
**LV6CE/LV6SF/LV6P** Body Clamp (mm)

Size	B*	W <sub>1</sub> *	W <sub>2</sub> *
8	82	70	55
10			
15			
20			
25			

\* Approximate dimension

Tri-Clamp is a registered trademark of Tri-Clover Inc.

**Discharge Capacity**



1. Differential pressure is the difference between the inlet and outlet pressure of the trap.
2. Recommended safety factor: at least 2.

Manufacturer

ISO 9001/ISO 14001

**TLV**® CO., LTD.  
Kakogawa, Japan

is approved by LRQA Ltd. to ISO 9001/14001

